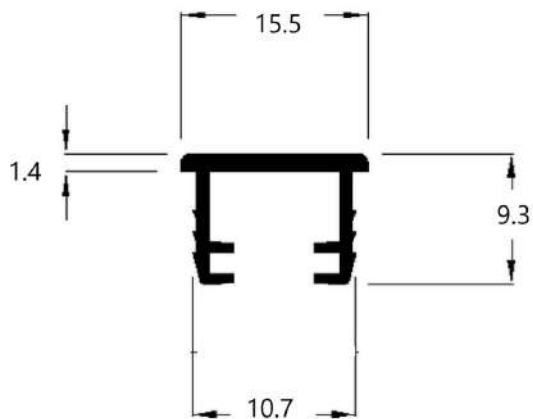


ABS U 15572

Lighting cover in grooved panel



Material and finishes:

ABS OPAL
PVC Clear
Translucent foil
Black translucent

Accessories: ABS U 1062

LED carrier profile with 8mm wide LED strip

We also offer ABS U 1062 without a LED strip inserted



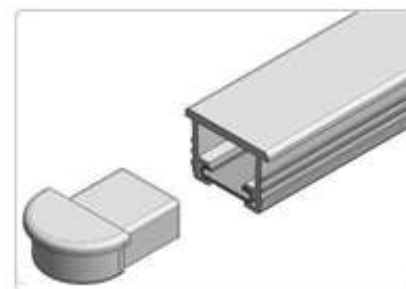
ABS U 1062 carrier profile with
8mm LED strip

EMB PLAT ABS U 15572

An end cap to give a nice finish look

Packaging:

Plastic bag
In boxes

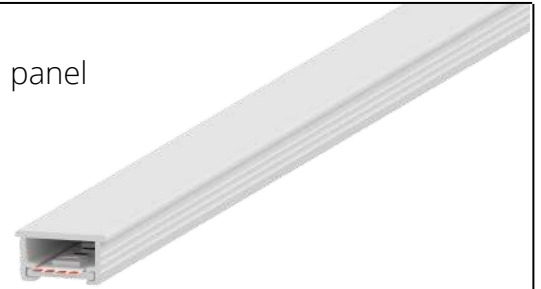
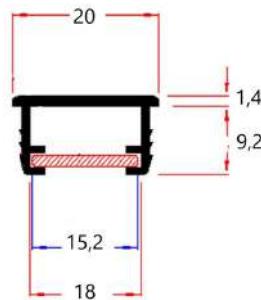


ABS U 20107

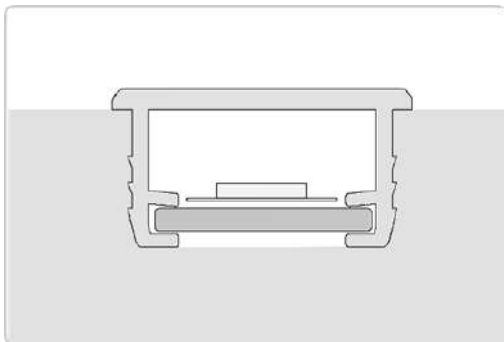
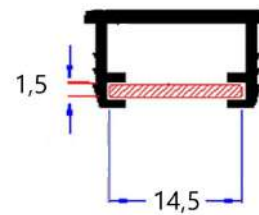
Lighting cover in grooved panel

Material and finishes:

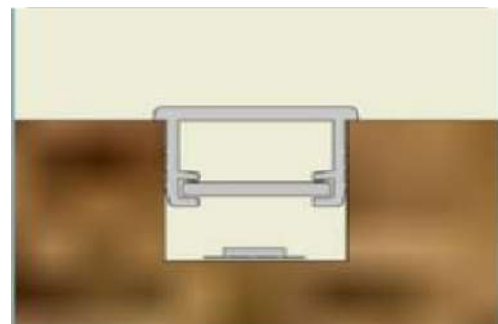
- ABS Opal
- PVC clear
- Translucent foil
- Black translucent



Accessories: BAN 14515 PVC/ABS



LED carrier design for insertion into ABS U 20107

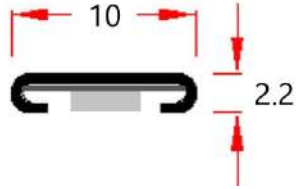


BAN 14515 used as a light diffuser with LED strip placed underneath

Packaging: Available in standard and custom lengths

ABS U 1062

LED profile designed for 8 mm wide LED strips



Facilitates LED strip insertion into our GALAXY profiles

We also offer it with LED strips inserted



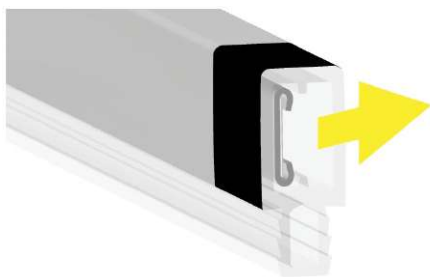
To be used with:



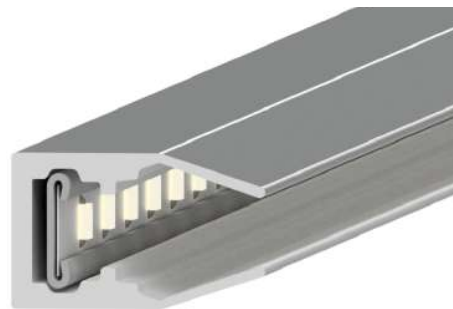
ABS U 15572



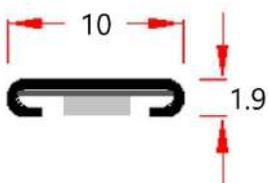
ABS TUREC 1451 ERG



BANLU 1682 TCR



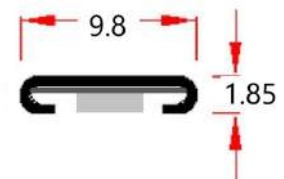
ABS CLIPO 24138



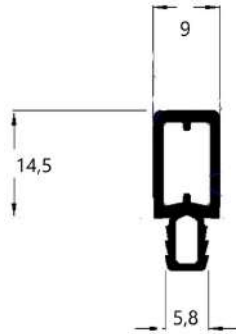
ABS U 1019

Slightly smaller versions also available

ABS U 9818



Banlu 1682 TCR



Material and finishes:

PVC Clear
Decorative film
Translucent foil



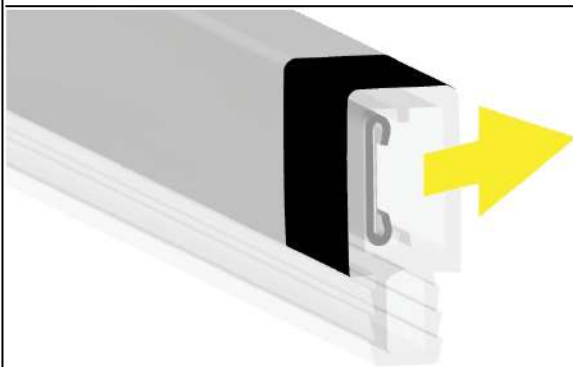
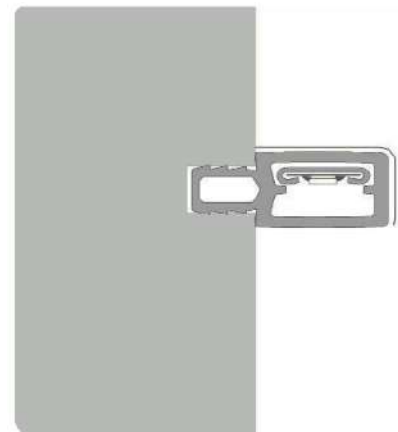
Accessories: ABS U 1062

LED carrier profile with
8mm wide LED strip

We also offer ABS U
1062 without a LED
strip inserted



ABS U 1062 carrier profile
with 8mm LED strip



Decorative film, to orientate the light and give a
decorative finish

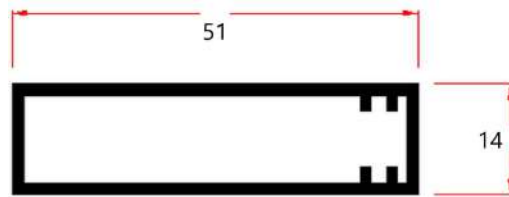
Packaging: available in standard and customized
lengths



ABS Turec 1451 ERG

Material and finishes:

- ABS OPAL
- Decorative film
- Translucent foil



Packaging:

Max length 4 m

EMB ABS TUREC 1451 ERG



End cap with hole



End cap without hole

Material and finishes:

- OPAL finishes
- Plain color
- Lacquer

Packaging:

- Plastic bag
- In boxes



Accessories: ABS U 1062

LED carrier profile with
8mm wide LED strip



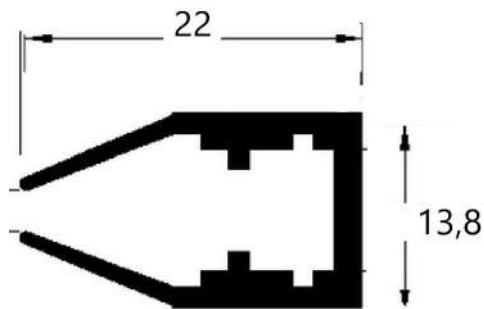
We also offer ABS U
1062 without a LED
strip inserted

ABS U 1062 carrier
profile with 8mm LED
strip



ABS CLIPO 24138

Glass shelf clip-on light



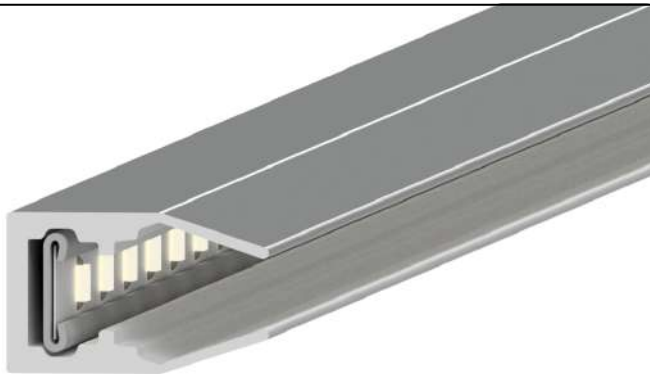
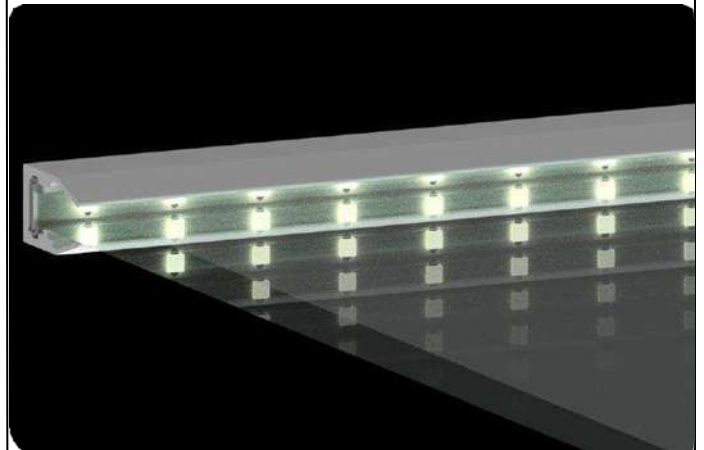
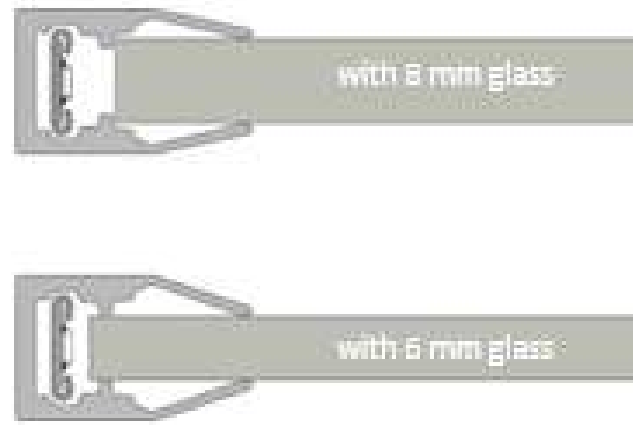
Projects LED light through a glass shelf for sparkling Fits 6 and 8 mm glass

Material and finishes:

ABS Opal finish
Plain colors
Decorative film

Accessories:

ABS U 1062



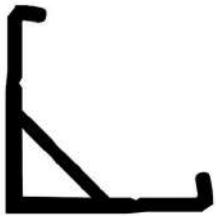
Banlu 2969



BANLU 2969

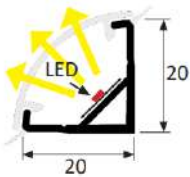
Material and finishes:

- ABS OPAL
- PVC Clear
- Decorative film
- Translucent foil
- Plain Color
- Black translucent



SOUP BANLU 2969 BIDUR/REC
(without soft lips)

- High impact PVC
- Plain colors



SOUP BANLU 2969 BIDUR
(with soft lips)

- High impact PVC
- Soft PVC
- Plain color



EMB BANLU 2969 + ST
(without hole)



EMB BANLU 2969 + AT
(with hole)



Material and finishes:

- ABS in plain colors
- ABS Opal finishes
- Transfer foil
- Lacquer finish

Packaging:

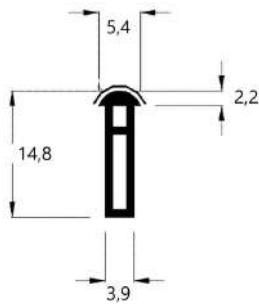
Available in standard and customized lengths

Mountin:

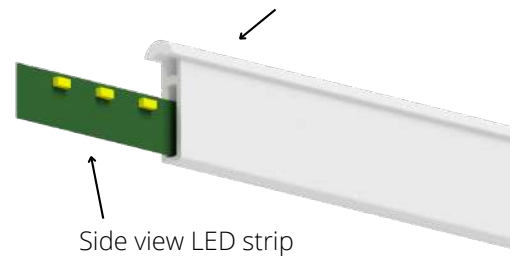


ABS BANLU 1756

LED profile for grooves, with side-view LED strip inserted



Optional modification for covering the end of the groove



Material and finishes:

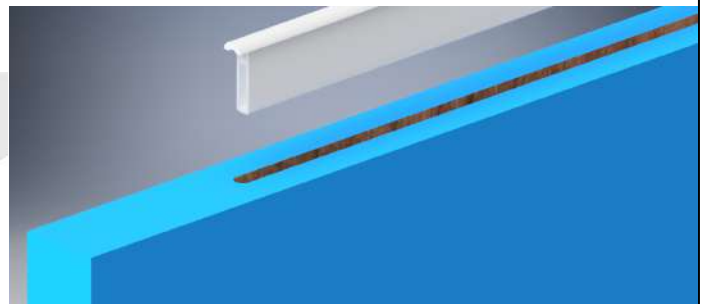
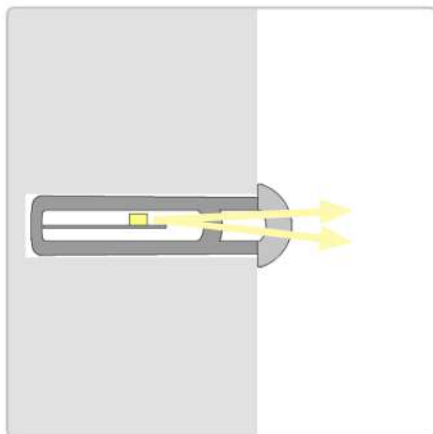
- ABS Opal
- PVC Clear
- Translucent foil
- Black translucent



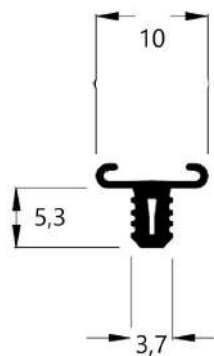
With translucent foil

Packaging:

Available in standard and customized lengths



ABS U 1062 T



Without LED strip

LED profile designed for 8 mm wide LED strips



Possible with inserted LED strip



Material and finishes:

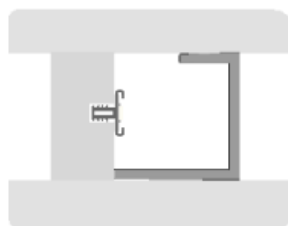
ABS

Plain colors

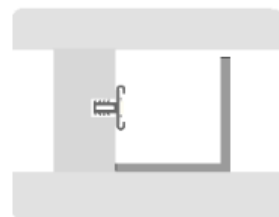
Packaging:

Available in standard and custom lengths

Could be used with:



ABS U 252512

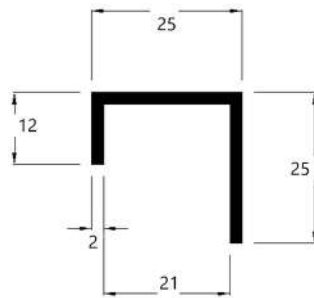


ABS L 2525

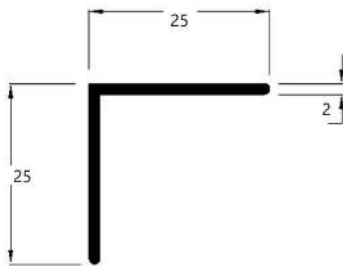
ABS U 252512 - ABS L 2525

Material and finishes:

- ABS OPAL
- Translucent foil
- Decorative film
- Black translucent



ABS U 252512



ABS L 2525



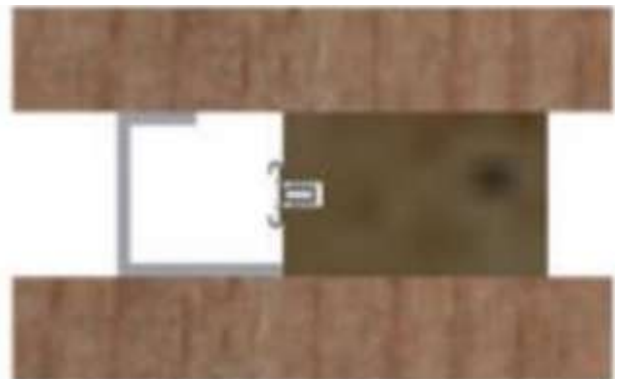
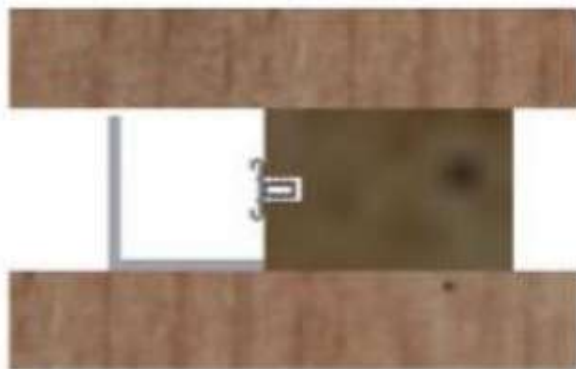
Mountin:



Packaging:

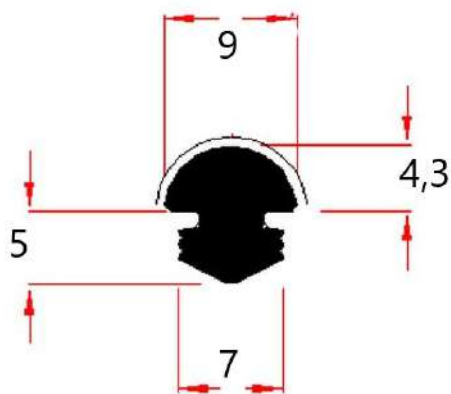
Available in standard and custom lengths

with ABS U 1062 T



Flexible T barb lighting profile

CRICOL 945/7 TDR



Material and finishes:

- FLEXIBLE PVC
- Transparent PVC
- Translucent foil

Accessories:

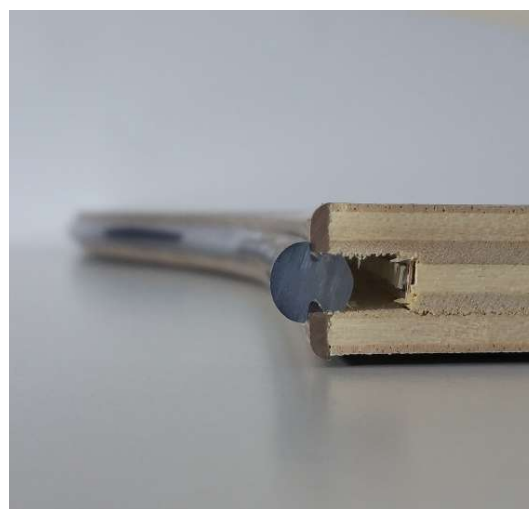
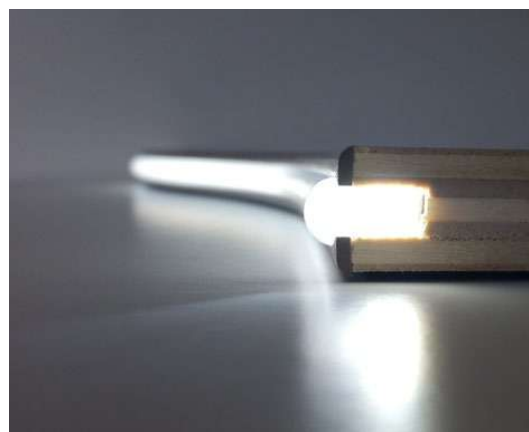
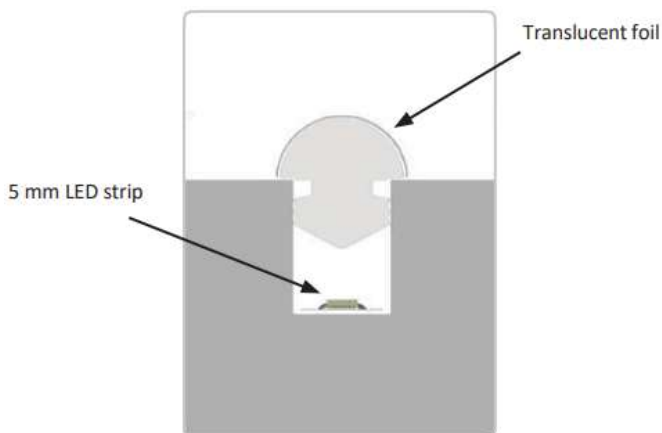
- 5 mm LED strip
- Power supply
- S-touch module (switch/dimmer)

Mounting:

Insertion in groove

Packaging:

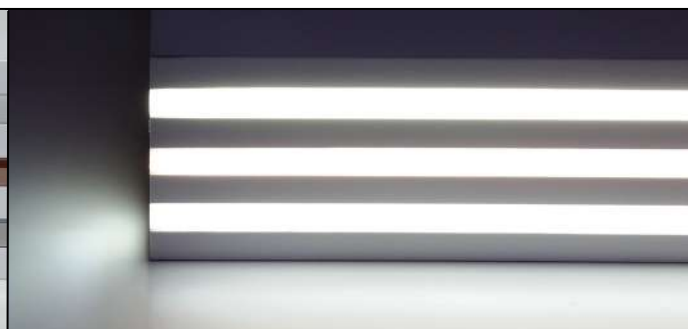
Available in standard and custom lengths



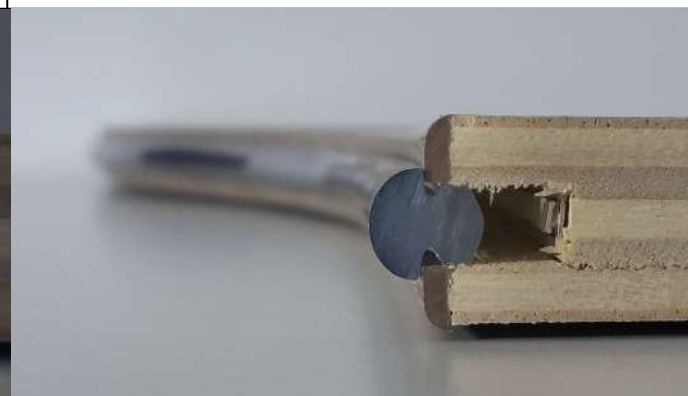
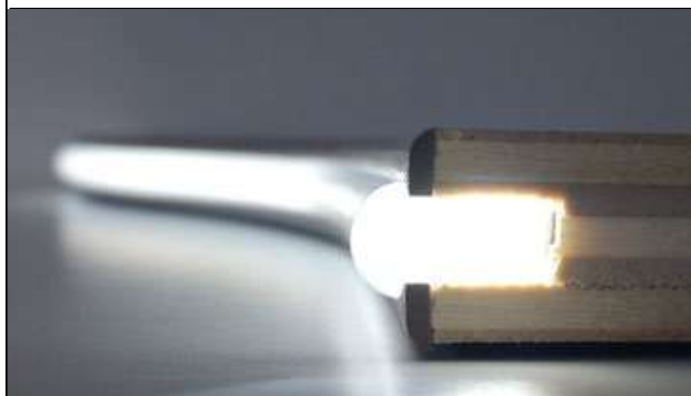
Decorative translucent foil on LED profiles



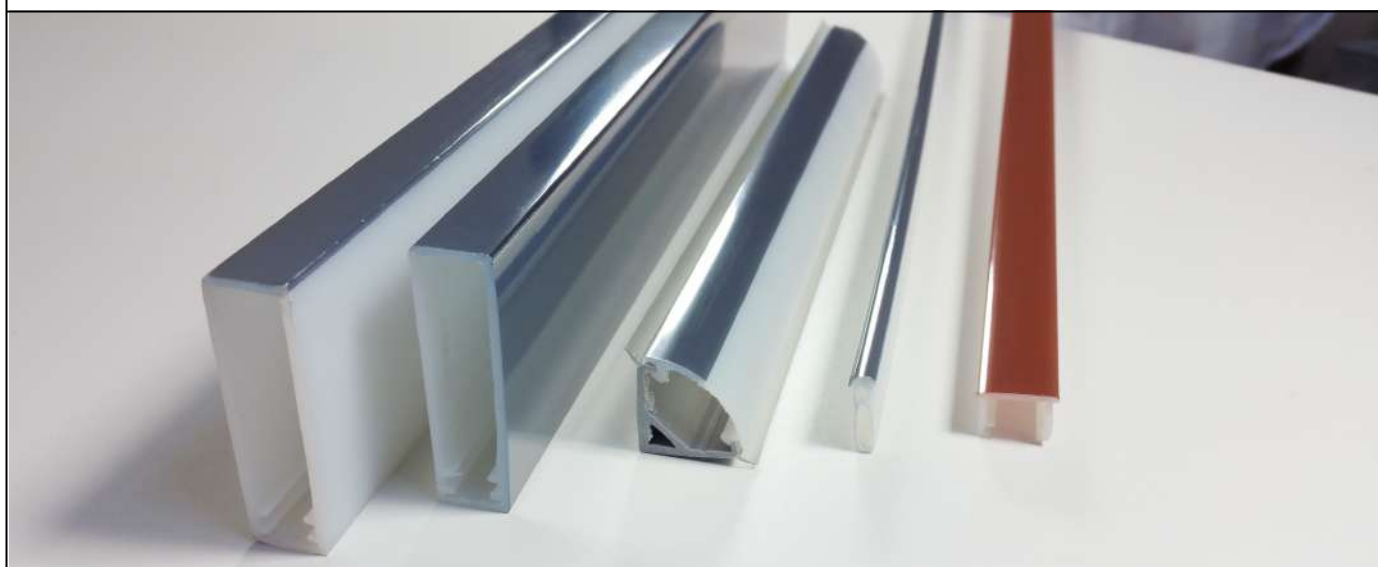
When the LED is off, you get the effect of the foil



When the LED is on, light passes through slightly colored by the metallic transfer foil



Translucent foil is available on both rigid and flexible LED profiles



S - Touch module

A tiny Touch Switch / Dimmer

Small capacitive touch module works with capacitive and conductive surfaces



Functions: ON/OFF - Dimmer - Timer

So small it fits inside LED profile

Power: Maximum load 5A
Supply 12-24 v DC

Use our profiles as a touch light switch

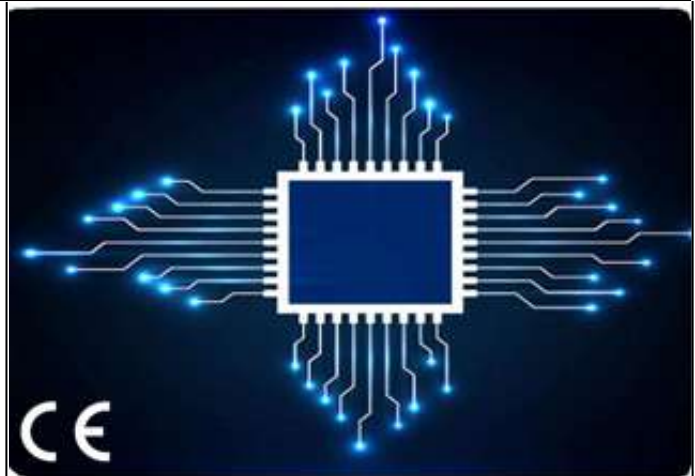
Available as:

Printed circuit board only
35x10x5 mm

With leads soldered and wrapped 56x11.5x5.8 mm

Wire length:

LED out, power supply 120 mm Sensor lead 200 mm



Works with both capacitance surfaces

Like our translucent film



OR



Conductive surfaces like an aluminum strip